
SCENIC  PROJECT, INC.

P.O. Box 340, Bentonsville, Va. 22610

July 6, 2010

Mr. Hank Hartz
Chairman, Board of Trustees
Virginia Outdoors Foundation
Capitol Place Building
1108 East Main Street, Suite 700
Richmond, VA 23219

Dear Mr. Hartz:

On behalf of Scenic 340 Project, Inc., I am submitting this nomination for the designation of the Front Royal to Luray corridor located in Page and Warren counties as a Special Projects Area. We request that this nomination be considered by the Trustees of the Virginia Outdoors Foundation at its September 1&2, 2010 meeting.

This extraordinary region of the Commonwealth features numerous conservation values, many of which are supported by public policies, including:

- Historic and scenic lands that can be viewed by travelers on public roadways, by recreational users of the South Fork of the Shenandoah, the Appalachian and Tuscarora Trails, and from the George Washington National Forest (GWNF), the Shenandoah National Park (SNP) and the Skyline Drive.
- Rich and diverse wildlife habitat including numerous Natural Heritage-identified sites (see map) and a critical wildlife travel corridor linking the SNP and GWNF, 1500 acres of which are protected by VOF easements.
- The South Fork of the Shenandoah River, which traverses the proposed area and a portion of which is eligible for Scenic River designation and is a popular recreational and fisheries resource which supports the local economy.
- Productive working lands, including farmland that supports Page County as the fourth highest agricultural revenue-producer in Virginia.
- Numerous historic sites and structures that tell the stories of pre- and early American settlement and the Revolutionary and Civil Wars.

Many private landowners within the corridor have demonstrated support for conserving the regions beauty and bounty through gifts of conservation easements (20 easements to date protecting more than 2,500 acres of farm and forestland). And Warren and Page counties have

demonstrated support for land and natural resource protection through strong Comprehensive Plan goals (see attachment).

I respectfully request the opportunity to formally present this nomination at the VOF September Board meeting. Thank you for your consideration.

Sincerely,



Frederick Andreae
President

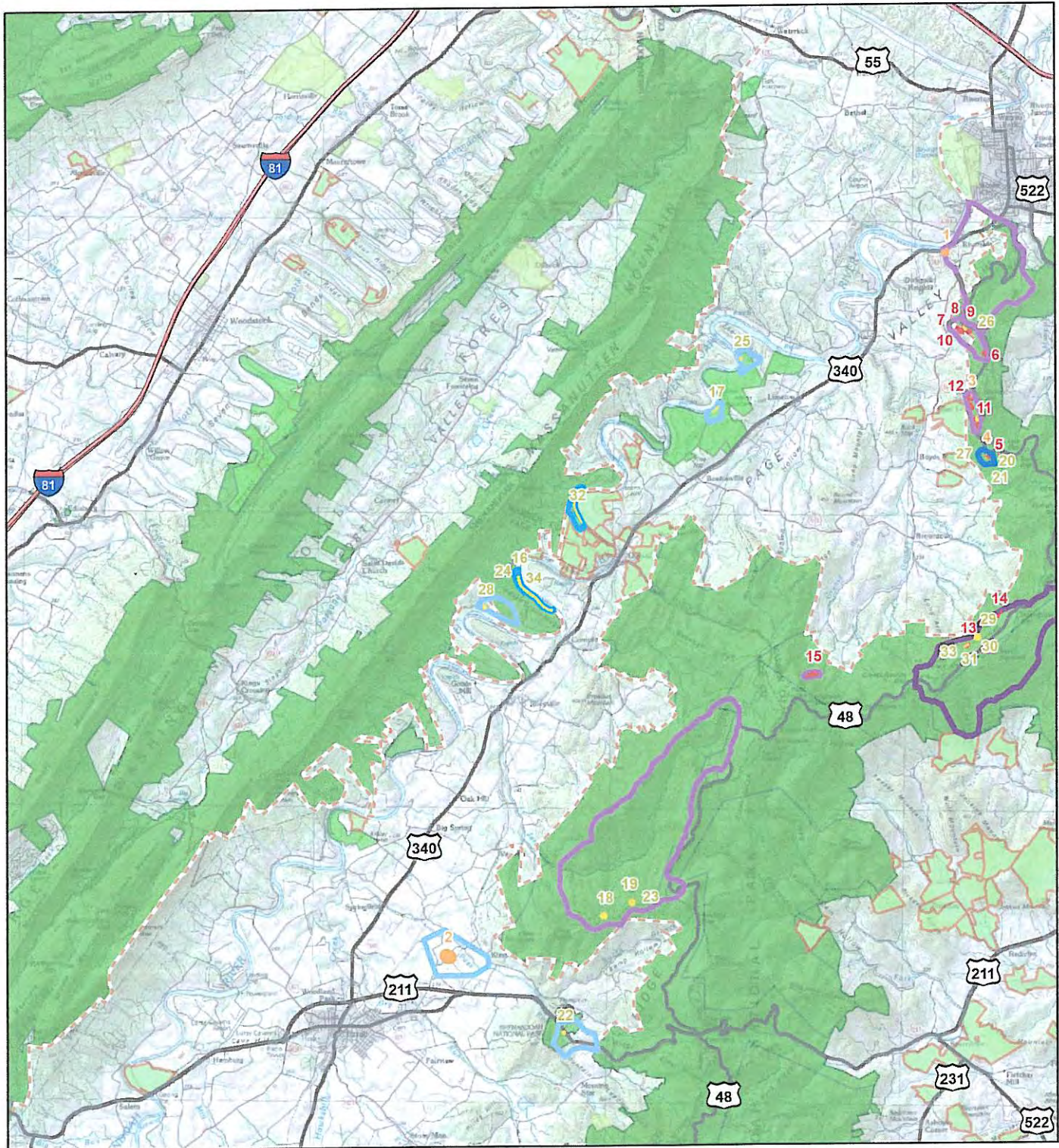
Attachments:

- Proposed VOF Board resolution
- Proposed special area boundary map with Heritage sites and conservation easements
- Page and Warren County Comprehensive Plan excerpts
- Letters of recommendation:

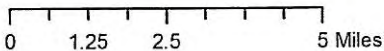
- Environmental Coordinator, Page County
- Valley Conservation Council
- Potomac Conservancy
- Friends of the Shenandoah
- Paul Otto, easement donor
- Tom Lockhart, easement donor

Photos

Front Royal to Luray Corridor Special Project Area



Project Area includes:
 87,541 Total Acres
 19 VOF Easements
 2356.57 Acres of VOF Easements
 Map Date: 6/24/10



Legend		
Element Occurrences	NH Screening Coverage	Conservation Lands
GROUP NAME	BRANK	
Invertebrate Animal	B1 - Outstanding	Federal
Natural Community	B2 - Very High Significance	Local
Vascular Plant	B3 - High Significance	Private
Project Area	B4 - Moderate Significance	State
Interstates	B5 - General Significance	VOF
Primary Roads		

EXCERPTS FROM
PAGE AND WARREN COUNTY COMPREHENSIVE PLANS

Page County

Land use policies of the County of Page as delineated in its comprehensive plan adopted in 2001 which contain the following goals, objectives, and strategies:

- “retain the present rural character of the unincorporated areas of the County” and to “preserve and enhance the County’s environmental quality”;
- “encourage the preservation of historic resources and county heritage” through the policy of encouraging and assisting property owners to voluntarily place scenic easements on lands associated with historic buildings, sites, districts and archaeological resources;
- “preserve and enhance the county’s environmental quality” through a policy of “limiting residential development in areas adjacent to the Shenandoah River and Hawksbill Creek and its tributaries.”

Warren County

Land use policies of the County of Warren as delineated in its comprehensive plan adopted on March 15, 2005 which contain the following:

Vision Statement: “...the quality and character of Warren County’s natural resources should be preserved, conserved, and used effectively to ensure that future citizens will enjoy the benefits of:

- An adequate, sustainable, clean, and potable supply of both surface water and ground water;
- Clean air;
- Farming and open spaces;
- The beauty of our rivers, mountains, and scenic views;
- Protection of our rural character...”

Goal: To preserve and improve the environmental quality of Warren County through measures which protect natural resources and environmentally sensitive air, lands, and waters.

Implementation: Encourage Open space – Encourage local citizens to preserve open space by placing their property in scenic easements.

Goal: To direct future development into an efficient and serviceable form that will preserve the County’s predominately rural character.

Implementation: State/Federal Program Participation – Encourage rural property owners and farmers to participate in State and Federal Programs designed to foster resource conservation. Such programs could include: Agricultural Cost-Share and Conservation Easements.

Warren County Comprehensive Plan (Cont.)

Goal: Develop Warren County land in accordance with local, state and federal standards that provide the best possible quality of life.

Objective: Identify and seek to retain significant views and vistas along the Skyline Drive and County roads.

Goal: Preserve the County's rural character by preserving open space, as well as agricultural and forest lands.

Implementation: State/Federal Program Participation – Encourage rural property owners, including farmers, to participate in State/Federal Programs designed to foster conservation of resources. Such programs might include: Agricultural Cost-Share and Conservation Easements.

Goal: Utilize public lands as a resource in maintaining the County's rural character.



COUNTY OF PAGE

Office of

Environmental Coordinator

101 S. Court St.

Luray, VA 22835

(540) 743-4808 or (540) 860-1988 (540) 743-1419 fax

canderson@pagecounty.virginia.gov

Chris Anderson

Coordinator

June 29, 2010

Mr. Hank Hartz
Chairman, Board of Trustees
Virginia Outdoors Foundation
Capitol Place Building
1108 East Main Street, Suite 700
Richmond, VA 23219

Dear Mr. Hartz,

I heartily support the designation of a Special Project Area for the corridor between Front Royal and Luray. This is a remarkable stretch of road and worthy of such a designation due to its status as a Scenic Byway, it is a well traveled route and has cultural and historical significance.

In the spring, redbuds bloom profusely on both sides of Highway 340, drawing many visitors with their beauty. A significant wildlife corridor exists at the border between Page and Warren Counties due to the conservation easements which have expanded the protected area between the Shenandoah National Park and George Washington National Forest. This route is also listed as a birding and wildlife trail by the Virginia Department of Game and Inland Fisheries.

The Scenic Byway designation was awarded because of the lack of sprawling commercial development, the many alluring views of the mountains and the Shenandoah River and the relative lack of roadside litter.

There are not many stretches of roadway remaining in Virginia which combine such unique qualities as this section of Highway 340. By protecting the natural beauty of our area, we strengthen local economies through tourism and encourage appreciation of our natural resources amongst both locals and visitors.

Please consider my strong support of this designation as you review the application for awarding this Special Project Area status.

Sincerely,

Chris Anderson
Page County



VALLEY
CONSERVATION
COUNCIL

Promoting land use that sustains the farms, forests, open spaces, and cultural heritage of the Shenandoah Valley region

July 8, 2010

Mr. Hank Hartz
Chairman, Board of Trustees
Virginia Outdoors Foundation
Capitol Place Building
1108 East Main Street, Suite 700
Richmond, VA 23219

Dear Mr. Hartz:

On behalf of the Board of the Valley Conservation Council, I am writing in support of the Scenic 340 Project nomination of the Front Royal to Luray corridor as a VOF Special Project Area. For twenty years the Valley Conservation Council has promoted conservation of working lands and natural resources throughout its 11-county service region, including the proposed corridor area in cooperation with Scenic 340 Project and the VOF.

This strategically important natural and historic landscape is rich in resources worthy of protection. If this nomination is approved, VCC pledges its continued collaborative efforts with VOF, Scenic 340 Project, and other partners to further pursue conservation easements within this corridor.

We commend VOF for establishing the Special Project Area program and recommend VOF's acceptance of the nomination of the Front Royal to Luray corridor.

Sincerely,


John Eckman
Executive Director



19 West Cork Street • Suite 201 • Winchester, VA 22601 • 540.667.3606 • Fax 540.667.7748

Shenandoah Resource Center

www.potomac.org

June 15, 2010

Mr. Hank Hartz
Chairman, Board of Trustees
Virginia Outdoors Foundation
Capitol Place Building
1108 East Main Street, Suite 700
Richmond, VA 23219

Dear Mr. Hartz:

I am writing on behalf of the Potomac Conservancy in support of the Scenic 340 Project nomination of the Front Royal to Luray corridor as a VOF Special Project Area. The Potomac Conservancy is a watershed-based land trust and conservation organization whose mission is to protect the health, beauty, and enjoyment of the Potomac River and its tributaries. The Conservancy's primary focus is protection of water quality through land protection and sound land use practices.

This special designation would clearly support the mission and goals of both Scenic 340 Project and the Potomac Conservancy, as well as VOF. It will also enhance strategic collaboration efforts among our organizations for land conservation and watershed protection within this exceptional portion of the Potomac River basin.

I urge the VOF Board of Trustees to approve the nomination of this deserving region of the Commonwealth.

Sincerely,

A handwritten signature in black ink that reads "Kelly Watkinson".

Kelly Watkinson
Senior Director of Land Protection

Central Office and Billing

8601 Georgia Avenue • Suite 612 • Silver Spring, MD 20910 • 301.608.1188 • Fax 301.608.1144



June 28, 2010

Mr. Hank Hartz
Chairman, Board of Trustees
Virginia Outdoors Foundation
Capitol Place Building
1108 East Main Street, Suite 700
Richmond, VA 23219

Dear Mr. Hartz:

The Friends of the Shenandoah River (FOSR) would like to express their support of the Scenic 340 Project nomination of the Front Royal to Luray corridor as a VOF Special Project Area. Portions of both the South Fork and the North Fork of the Shenandoah River flow through this special projects area. Land conservation and water quality protection go hand-in-hand. The FOSR is a watershed-based conservation organization whose mission is to protect the health, beauty, and enjoyment of the Shenandoah River and its tributaries. Our primary focus is protection of water quality through our long-term water quality monitoring program.

This special designation would clearly support the goals and mission of both the Scenic 340 Project and the FOSR, as well as that of your organization. It should also help foster strategic collaboration efforts among all the organizations for land conservation and watershed protection that exist within this exceptional portion of the Northern Shenandoah Valley.

I urge the VOF Board of Trustees to approve the nomination of this deserving region of the Commonwealth.

Sincerely,

George L. Ohrstrom, II
President

Friends of the Shenandoah River
1460 University Drive | Winchester, Virginia 22601 | 540.665.1286

June 28, 2010

Mr. Hank Hartz
Chairman, Board of Trustees
Virginia Outdoor Foundation
Capitol Place Building
1108 Main Street, Suite 700
Richmond, Virginia 23219

Dear Mr. Hartz:

As a Page County, Virginia resident and landowner of over 150 acres under Conservation Easement with your organization, I wholly endorse and support the resolution proposed by Scenic 340 Project, Inc. for your adoption. In addition to the excellent points outlined in the very comprehensive proposal, I offer the following for your consideration.

Having served on the Page County Planning Commission for six and one half years I am keenly aware of the need to preserve open space, as is stated repeatedly throughout the Comprehensive Plan. I am also aware of how increasingly difficult it is to do so. Residential development is already distributed throughout the county to the extent a map showing residential use in red looks like a bad case of acne. And that map does not show the additional 4000 lots of one acre or less subdivided and platted but not built upon. There is no large area within the county of contiguous Agricultural and/or Forrestral use. The only Agricultural District in the county has shrunk from over 1200 acres to approximately 900 acres. Last year a working farm of 200 plus acres was rezoned from Agricultural to Industrial to facilitate plans for a county owned business park. My parcel is now one of the few remaining in the county of 100 acres or more.

The Page County Comprehensive Plan specifically encourages the use of Conservation Easements, but current Virginia Outdoor Foundation policy does not accommodate the smaller parcel size typical of Page County. I understand that one of the advantages available to a designated special project area is the consideration of parcels less than 100 acres for conservation easement. If applied to Page County, or any part thereof, I feel it would be a tremendous help to the effort to preserve open space. I urge you to adopt the resolution as proposed.

Yours very truly;



Paul L. Otto

2251 Stonewall Jackson Highway
Bentonville, Virginia 22610

July 2, 2010

Mr. Hank Hartz, Chairman
Virginia Outdoors Foundation
1108 East Main Street, Suite 700
Richmond, Virginia 23219

Re: Special Project Area
Warren & Page Counties Virginia

Dear Mr. Hartz,

Congratulations to the Virginia Outdoors Foundation in reaching the goal set by former Governor Kaine by placing more than 400,000 acres of land under easement during his tenure. Governor McDonnell has continued the cause by setting a goal to conserve another 400,000 acres. In furtherance of preserving more acres of our precious Commonwealth, this letter shall serve as representation of my support of the nomination by Scenic 340 Inc. of an area located in Warren and Page Counties for designation as a Special Project Area.

In 2007 the Virginia Outdoors Foundation accepted an easement donation from me which covers the 300 acre Stinson River Farm in Warren County, which would be included in this area. This farm was acquired in 1796 and through the good fortune of my ancestors I happen to be the seventh generation of the Stinson family to own it. The easement held by the Virginia Outdoors Foundation provides the security and serenity that no matter who may own this land in the future, its beauty and scenery will be forever preserved.

In the adjacent Bentonville-Overall area, neighboring landowners have placed approximately 1,400 acres under easement to insure the perpetuation of the rural landscape not only for themselves but also those who succeed them and other visitors and residents. The designation by the Virginia Outdoors Foundation of this area would aid, assist, and encourage other landowners to consider placing their property under easement. Also, the designation would encourage other conservation organizations who are working to enlarge the acreage under easement.

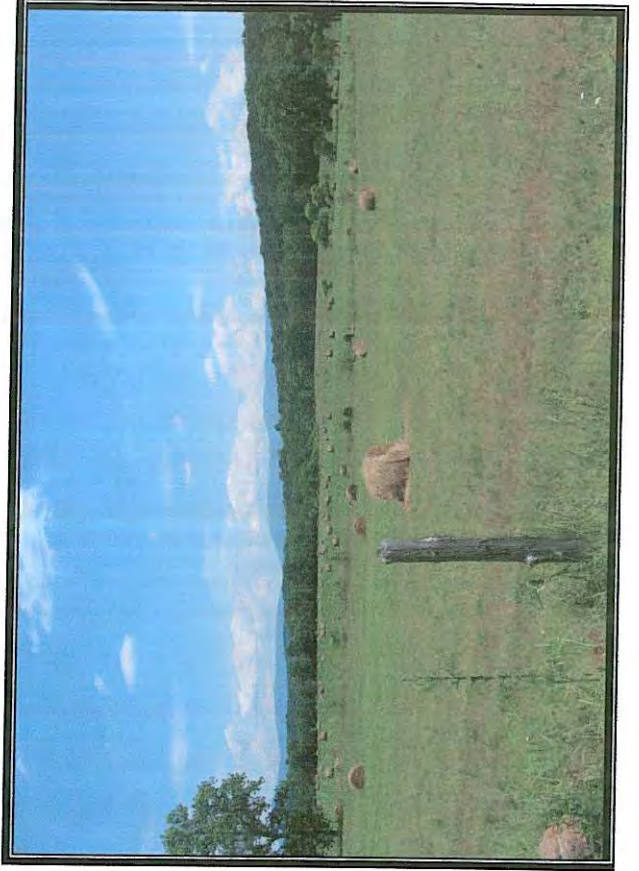
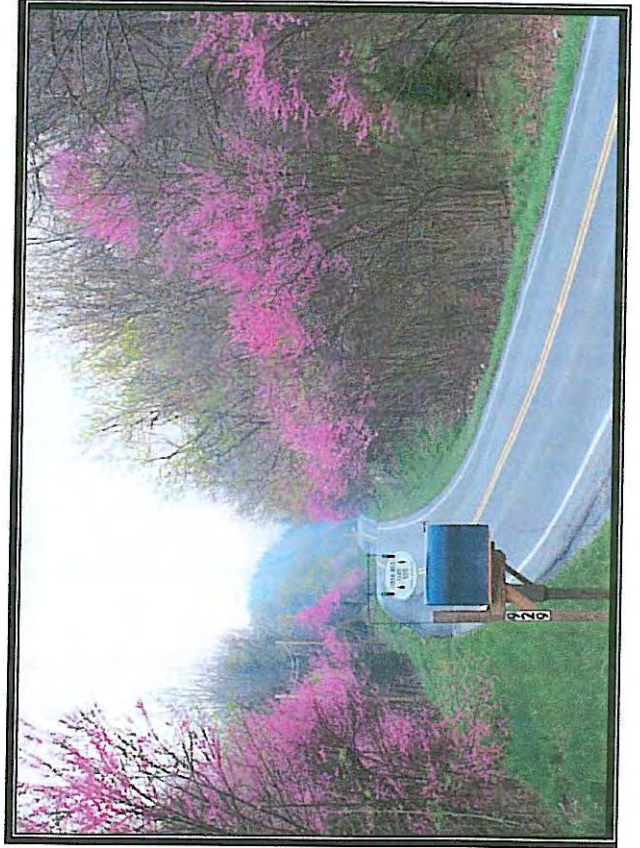
I respectfully request that the Virginia Outdoors Foundation accept the nomination of the Front Royal to Luray corridor as a Special Project Area in order to further enhance, preserve and protect this historical, scenic, and vital section of the Shenandoah Valley of Virginia.

Sincerely



Thomas Jackson Lockhart

FRONT ROYAL TO LURAY SPECIAL PROJECT AREA NOMINATION



VIRGINIA OUTDOORS FOUNDATION (VOF)

RESOLUTION TO DESIGNATE THE FRONT ROYAL TO LURAY CORRIDOR AS A VOF SPECIAL PROJECT AREA

WHEREAS, Scenic 340 Project Inc. has nominated the Front Royal to Luray corridor in Page and Warren counties for Special Project Area designation; and

WHEREAS, the VOF Guidelines define factors justifying the designation of Special Project Areas; and

WHEREAS, the Front Royal to Luray corridor is an area of statewide natural and historic significance, as indicated by state planning and policy documents and containing:

- i. 44 sites that host rare species and natural communities identified by the VA Division of Natural Heritage and which contribute to the biological diversity of the region.
- ii. The South Fork of the Shenandoah River, a portion of which is eligible for Scenic River designation according to the 2009 Virginia Outdoors Plan (VOP) compiled by the VA Department of Conservation and Recreation.
- iii. Bucolic lands along US Route 340, a designated Virginia Scenic Byway from Front Royal to Luray, also identified in the VOP.
- iv. US Route 340, designated as the “Front Royal Loop” as part of the Virginia Birding and Wildlife Trail established by the VA Department of Game and Inland Fisheries.
- v. Milford Historic Battlefield District, a Civil War battlefield listed as a Virginia Historic Landmark and on the National Register of Historic Places in June 2004 (US Route 340 played a critical role in General Stonewall Jackson’s Valley Campaign); and

WHEREAS, the proposed Special Project Area contains scenic and forested land that buffers the Shenandoah National Park (SNP) on the eastern boundary and the George Washington National Forest on the western boundary and that can be viewed from the Appalachian Trail, Tuscarora Trail, and Skyline Drive; and

WHEREAS, the proposed Special Project Area includes a critical wildlife travel corridor identified by VA Department of Game and Inland Fisheries and the Valley Conservation Council, linking the SNP and the George Washington National Forest (Massanutten Mountain range) and of which 2,557 acres is protected by VOF (19) and VA Department of Historic Resources (1) easements; and

WHEREAS, South Fork of the Shenandoah River, which traverses the proposed area, is a major tributary of the Chesapeake Bay and the protection of riparian lands in this watershed will contribute to the health of the Bay and support the federal Executive Order on “Chesapeake Bay Protection and Restoration” (5/12/2009); and

WHEREAS, the South Fork of the Shenandoah River, is a popular recreational and fisheries resource which in turn, supports the local economy; and

WHEREAS, the road known as U.S. Route 340 and paralleling the South Fork of the Shenandoah River, follows a travel corridor used by Native Americans for 13,000 years, beginning with the First People of the Flint Run National Historic District and continuing to the First Farmers of 1,000 years ago; and

WHEREAS, U.S. Route 340, historically known as the Front Royal-Luray Turnpike, is connected to the military history of the western Virginia at several critical junctures, including:

*the American Revolution, when General George Washington planned a redeployment of the Continental Army at Fort Valley via a section of the road known as "Morgan's Road":

*the American Civil War, when General Stonewall Jackson's 1862 Valley Campaign relied on the road for the movement of troops and supplies; and when 1864 cavalry engagements at Milford (Overall) marked one of the last Confederate stands in the Shenandoah Valley, known as the "Breadbasket of the Confederacy"; and

WHEREAS, the Front Royal-Luray Turnpike (Route 340) and its associated canal and railroad links facilitated commerce and the establishment of communities in the Page Valley; and

WHEREAS, the Route 340 Corridor in the Page Valley follows a narrow river corridor between two significant mountain features (the Blue Ridge on the east and Massanutten Mountain on the west), it has provided accessibility to the uplands and connected eastern and western communities for thousands of years; and

WHEREAS, rural lands in the proposed Special Project Area surround and buffer the Raymond R. "Andy" Guest State Park; and

WHEREAS, Warren and Page County Comprehensive Plans support the protection of rural lands and natural resources within the corridor area; and

WHEREAS, support for the designation has been expressed by the Page County Water Resource Coordinator, Friends of the Shenandoah, Potomac Conservancy, Valley Conservation Council, and many local landowners through their donations of conservation easements and membership participation in Scenic 340 Project Inc.; now, therefore, be it

RESOLVED by the Virginia Outdoors Foundation Board of Trustees this 2nd day of September, 2010, That the Front Royal to Luray Corridor in Page and Warren counties is hereby designated a VOF Special Project Area.

ADOPTED by a vote of: _____

ATTEST: _____
G. Robert Lee, Executive Director